

SharePoint configuration for Mindjet MindManager

1. SharePoint Server configurations for MMAP file extension

Open the file

```
Local_Drive:\Program Files\Common Files\Microsoft Shared\Web Server Extensions\12\TEMPLATE\XML\DocIcon.xml
```

Add the following line within the ByExtension element in DocIcon.xml:

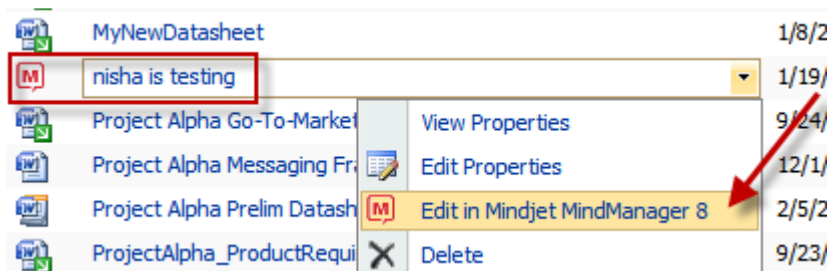
```
<Mapping Key="mmap" Value="MindManager.gif" EditText="Mindjet MindManager" />
```

Save DocIcon.xml

Copy the file MindManager.gif to the

```
Local_Drive:\Program Files\Common Files\Microsoft Shared\Web Server Extensions\12\TEMPLATE\IMAGES directory
```

This will make sure maps are viewable in SharePoint like below:



2. Web server (IIS) configurations for MMAP file extension

Add the following MIME type to IIS using the IIS Manager (Select Mime Types -> Add)

```
Extension: .mmp .mmap .mmpt .mmap .mmmp .mmas  
MIME type: application/vnd.mindjet.mindmanager
```

This will make sure MindManager files are properly recognized by your web browser and not downloaded as a ZIP archive.

3. A Map downloaded from SharePoint is opened as ZIP file

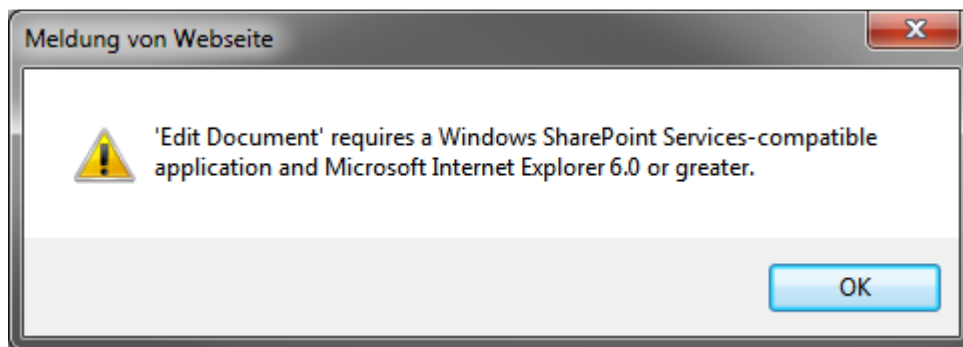
This issue is caused by incorrect MIME handling of Microsofts Internet Explorer. To fix this issue follow these steps:

- Open the Windows Registry
- Go to **HKLM\Software\Microsoft\IE\Main\FeatureControl\FEATURE_MIME_HANDLING** or **HKKEY_LOCAL_MACHINE\SOFTWARE\Microsoft\Internet Explorer\Main\FeatureControl\FEATURE_MIME_HANDLING**
- Change the DWORD value for “iexplorer.exe” to “0”.
- Close the Registry and restart IE
- Now the Maps should open properly

4. Error “Edit Document requires a Windows SharePoint Services-compatible application”

Symptom

The following error is shown, when you try to open a MindManager map from the context menu of a map (“Edit in Mindjet MindManager”).



Cause

The file mapping in Doclcon.xml configuration is incorrect

Resolution

Some instructions on the internet describe the following file mapping for MMAP in SharePoint:

```
<Mapping Key="mmap" Value="MindManager.gif" EditText="Mindjet MindManager 8" OpenControl="MindManager.OpenDocument" />
```

The OpenControl attribute is NOT applicable to MindManager. Simply remove it from the Doclcon.xml and the command will properly open and edit MindManager maps as designed for Non-Microsoft Office documents.

Background

The **OpenControl** attribute specifies the ProgID of the control to use for opening files of the specified type. In order to make OpenControl working you need to add an editing application to SharePoint.

References

<http://msdn.microsoft.com/en-us/library/ms868275>

Adding an editing application

Create a DLL providing the control to load for a document of the specified type whose ProgID identifies the control, for example, **SharePoint.OpenDocuments**. The control that you create must provide the same methods for creating, opening, and viewing documents as described for the **OpenDocuments** control.

<http://www.codecomments.com/message376491.html>

The DOCICON.XML file identifies the "OpenControl" value which is the ActiveX component that needs to be uploaded to the users browser when they are browsing a document library that contains a file of the type you're trying to edit. By default, Sharepoint installs "OpenDocuments" ActiveX control that has the object named "Sharepoint.OpenDocuments".

I believe you'll have to write your own ActiveX DLL that implements the same methods that the default Sharepoint OpenDocuments control provides. Then you need to create your same entry in DOCICON.XML but replace the OpenControl= statement with the name of your custom ActiveX control that launches the editing application.

...

This object must be loaded locally on the client's local PC because the component name is passed to the local JavaScript which in turn creates the "???.OpenDocuments" object when you select the Edit menu item. This is just a small program that passes the URL of the document to the application.